



SYNERGY SKY

Synergy ANALYZE

WHAT

Analytics tool that provides collaboration insights

FOR WHO

Organizations with multiple collaboration vendors

KEY FEATURES

- ✓ Multi-dimensional collaboration analytics
- ✓ All data stays on customer premises
- ✓ Easy deployment

KEY INSIGHTS

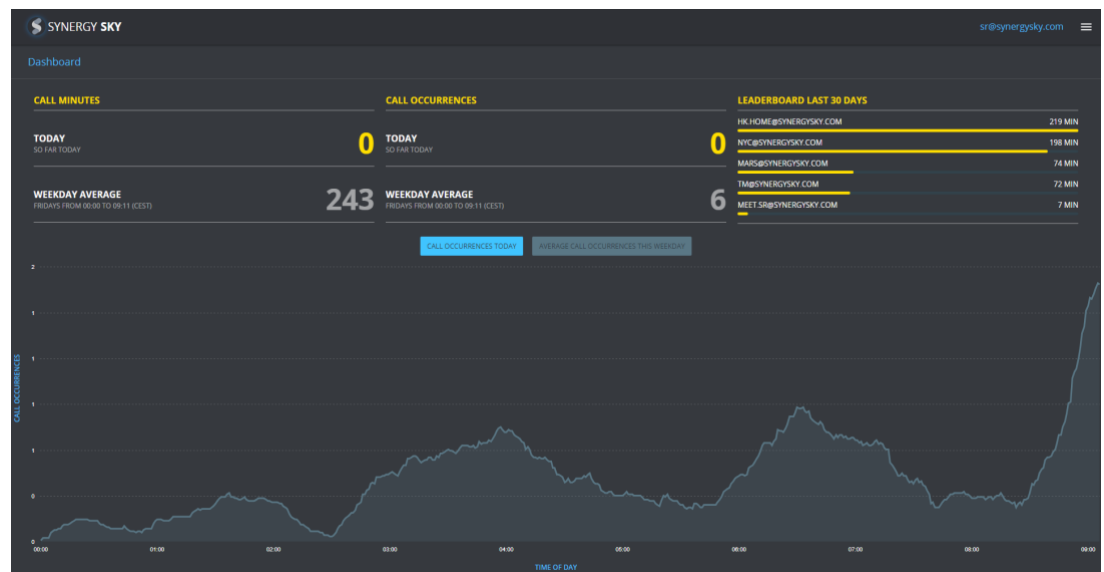
- ✓ ROI
- ✓ Travel Cost Saving
- ✓ CO2 Savings
- ✓ Heat Maps
- ✓ Usage history and trends
- ✓ Productivity Increase
- ✓ Work Life Balance

SUPPORTED TECHNOLOGIES

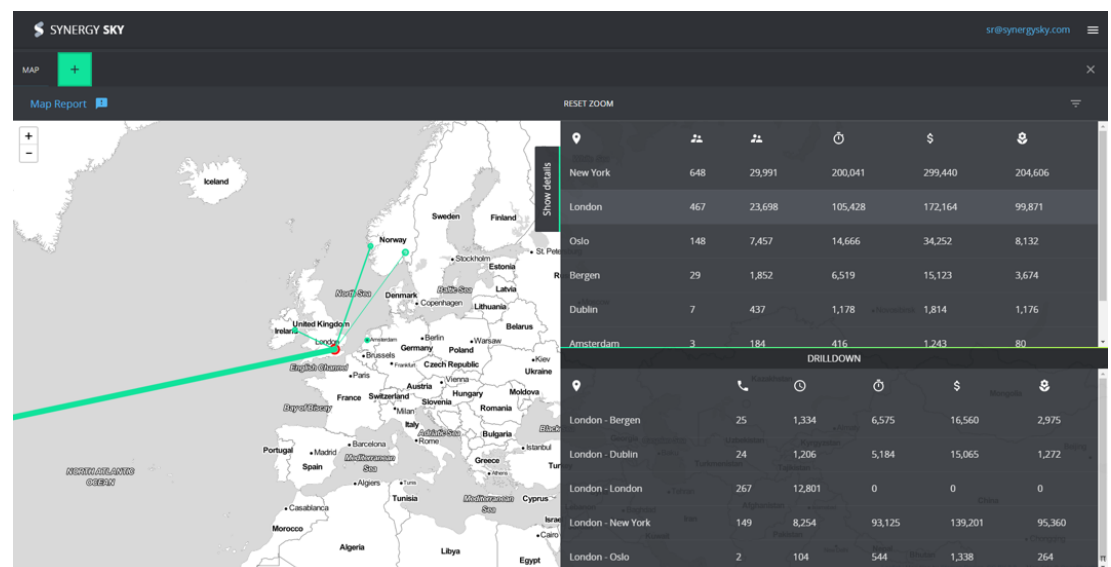
- ✓ Cisco VCS/CMS
- ✓ Pexip Infinity

Synergy ANALYZE helps organizations **understand collaboration** trends and patterns, and provides the **analysis** needed to make **fact-based decisions** on collaboration investments, divestments, training, and service changes.

Analytics data contributes to an increased ROI for collaboration, and in addition provides clear evidence of this to stakeholders.



Get a full overview of your organization's collaboration usage



Tag systems and users with geo location to get insights on CO2 and travel cost savings

Book Demo
<http://www.synergysky.com/>

FEATURES

- ✓ Live dashboard
- ✓ Intelligent matching of data from different devices to avoid duplicate reporting of the same calls
- ✓ Fully customizable URI tagging system with Department, Location, Country and Custom Tags
- ✓ User and Admin roles
- ✓ Unique on-premises solution, keeping your data on your premises
- ✓ Quick installation
- ✓ Local and Time zone configuration support for formatting and calculation
- ✓ Single click upgrade and maintain function
- ✓ Batch management of URIs for swiftly tagging of multiple URIs

SPECIFICATIONS

From	To	Protocol (Port)	Description
ANALYZE Server	92.220.31.18/28	SSH (2222)	Remote support disabled as default.
ANALYZE Server	*	DNS	
ANALYZE Server	*	NTP	Default target is: 0.freebsd.pool.ntp.org, 1.freebsd.pool.ntp.org 2.freebsd.pool.ntp.org
ANALYZE Server	pkg.FreeBSD.org	HTTP/HTTPS	Software update repository, web proxy is supported
ANALYZE Server	92.220.31.18/28	HTTP/HTTPS	Software update repository, web proxy is supported
ANALYZE Server	Cisco Video Communication Server API	HTTP/HTTPS	CDR harvest of Cisco VCS
ANALYZE Server	Cisco Meeting Server API	HTTPS	System configuration of CDR Receiver using Management API
Cisco Meeting Server Node	Appliance	HTTP/HTTPS	CDR pushed from Cisco CMS to the AS
ANALYZE Server	Pexip Infinity API	HTTP/HTTPS	System configuration of CDR Receiver using Management API
All Pexip Infinity Nodes	Appliance	SYSLOG (TCP)	CDR syslog pushed from Pexip Infinity to the AS
Web client	ANALYZE Server	HTTP	User interface access is through the cloud over HTTP, proxy is supported.

Device version support

Device	Version
Cisco Video Communication Server	X7.x →
Cisco Meeting Server	2.x →
Pexip Infinity	6.x →

